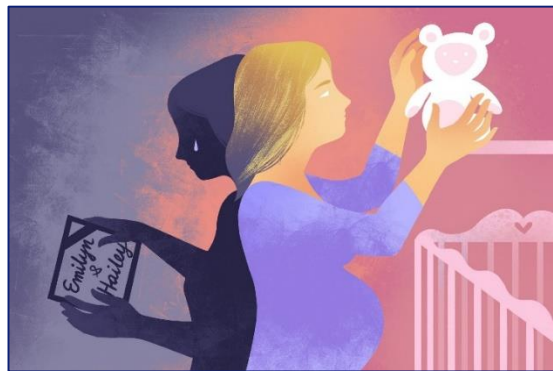


# Impact van corona-maatregelen op vroeggeboorte

Dr. Jasper V. Been  
kinderarts-neonatoloog

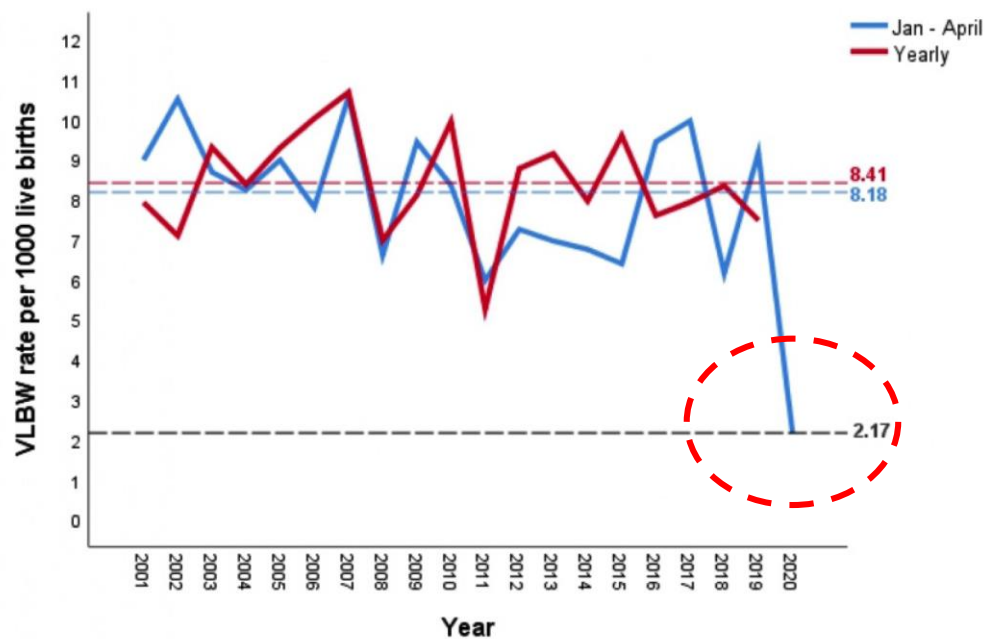




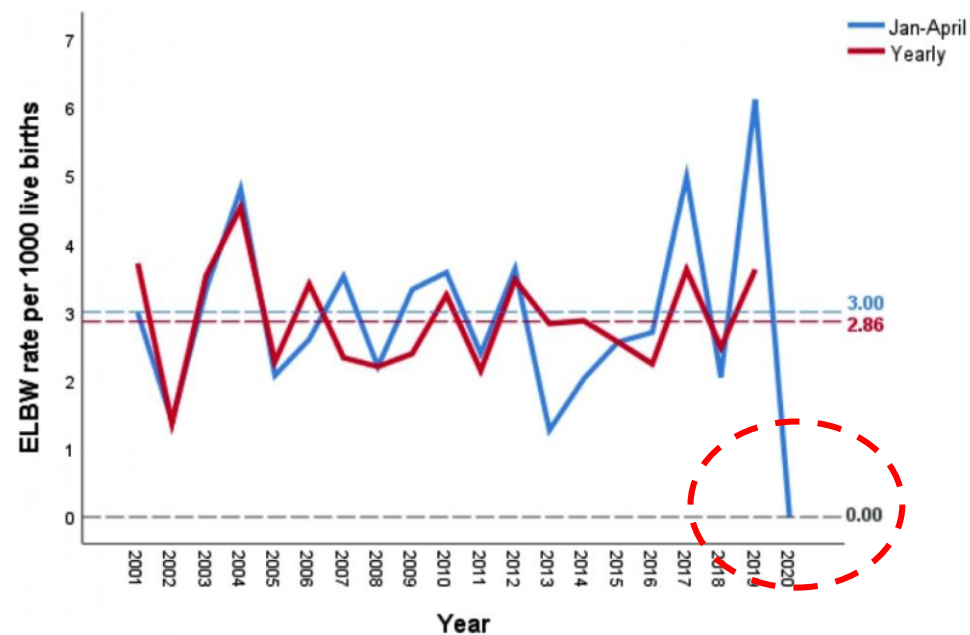
# Reduction in preterm births during the COVID-19 lockdown in Ireland: a natural experiment allowing analysis of data from the prior two decades.

ORCID Roy K Philip, ORCID Helen Purtill, Elizabeth Reidy, ORCID Mandy Daly, ORCID Mendinaro Imcha, ORCID Deirdre McGrath, ORCID Nuala H O'Connell, ORCID Colum P Dunne

### <1500 gram

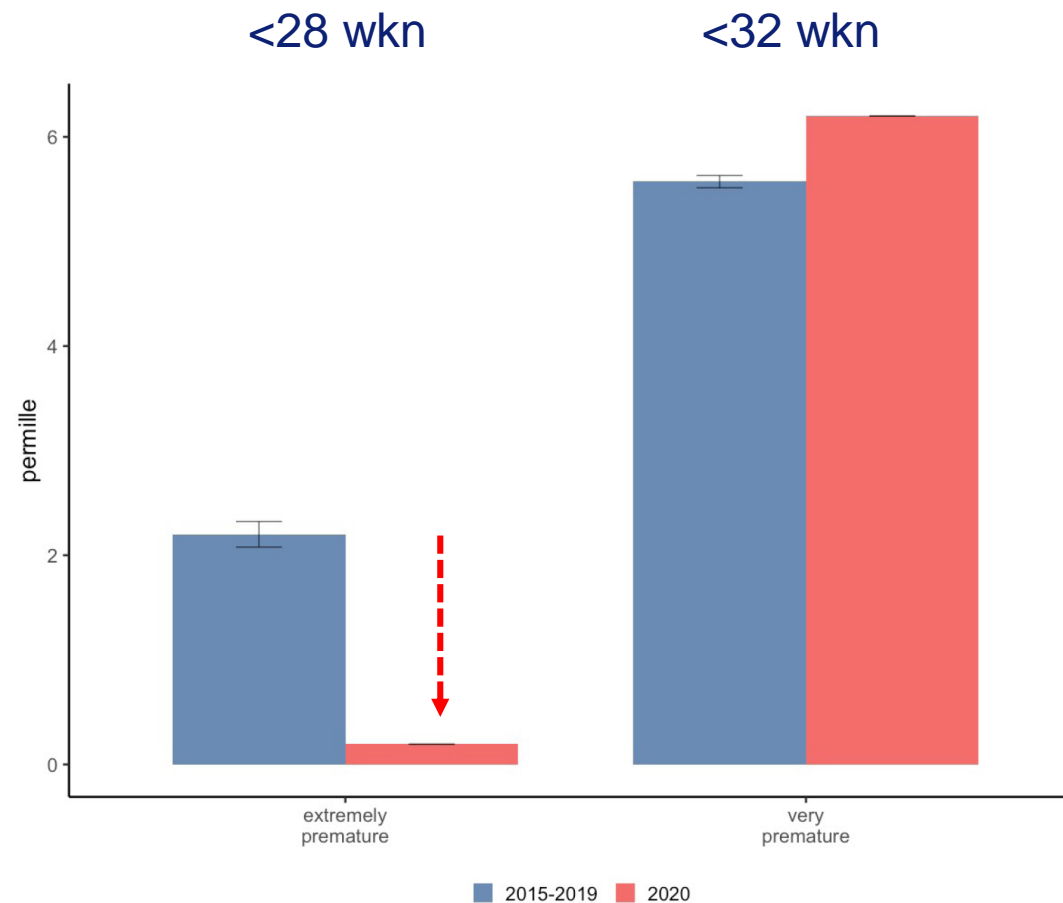


### <1000 gram



# Changes in premature birth rates during the Danish nationwide COVID-19 lockdown: a nationwide register-based prevalence proportion study

Gitte Hedermann, Paula L Hedley, Marie Baekvad-Hansen, Henrik Hjalgrim, Klaus Rostgaard, Pornniva Poorisrisak, Morten Breindahl, Mads Melbye, David Hougaard, Michael Christiansen, Ulrik Lausten-Thomsen



## *During Coronavirus Lockdowns, Some Doctors Wondered: Where Are the Premies?*

Hospitals in several countries saw dips in premature births, which could be a starting point for future research.



NOS NIEUWS • BINNENLAND • BUITENLAND • ZO 19 JULI, 22:30

## 'Mysterieuze daling vroeggeboren baby's gedurende lockdown'





ALLES invullen met ballpoint; goed doordrukken  
NETI GEbruIKBAAR na 21-12-2013 (versie 2013)

Achternaam baby: .....

Voorna(a)m(en): .....

Woonadres: .....  m  v

Postcode: .....

Woonplaats: .....

Achternaam moeder: .....

Tel.nr. ouders/verzorgers: .....

Geboorte: ..... datum ..... tijdstip .....

Bloedafname: .....

Geboortegewicht: ..... gram

Zwangerschapsduur: ..... weken + ..... dagen

Bloed/wisseltransfusie: ..... datum ..... EINDtijdstip BT

ja, ..... / ..... / .....

Soort:  Ery's  Plasma  Trombo's

Huisarts: .....

Te ..... Tel: .....

Opmerkingen

bij 2e Hieiprik, svp vermijden setnr 1e hieiprik

alleen sikkelcel (na eerdere bloedtransfusie)

geen materiaal vanwege / overige: .....

Geboren:

thuis  elders .....

ziekenhuis naam: .....

Geboorteplaats: .....

Bloedafname door:  screener  verloskundige  anders

ziekenhuis tel afd.: .....

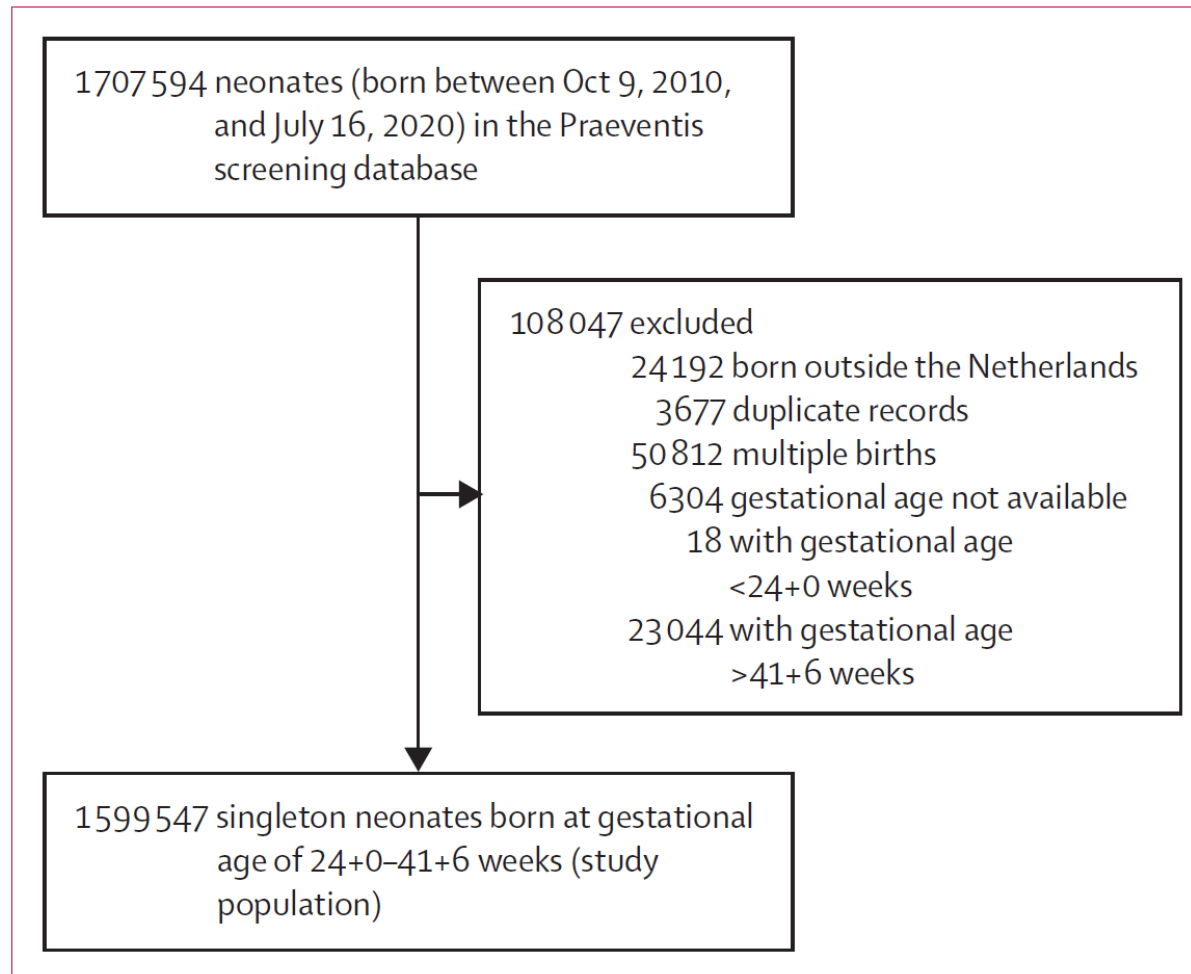
Organisatie: .....

Naam uitvoerder: .....

Ouder wil uitslag dragerschap SZ weten:  nee, paraaf ouder(s): .....

Ouder maakt bezwaar tegen bewaren bloedmonster voor anoniem wetenschappelijk onderzoek:  ja, paraaf ouder(s): .....

N/O/A



# Vergelijking met Perined

Karakteristiek	2011		2014		2017	
	Praeventis	Perined	Praeventis	Perined	Praeventis	Perined
Zwangerschapsduur	n=173,965	n=172,453	n=169,375	n=169,225	n=164,478	n=160,818
24+0 – 31+6 wkn	1,223 (0.7)	1,512 (0.9)	1,236 (0.7)	1,515 (0.9)	1,139 (0.7)	1,345 (0.8)
32+0 – 36+6 wkn	8,081 (4.6)	8,221 (4.8)	7,772 (4.6)	7,883 (4.7)	7,218 (4.4)	7,363 (4.6)
37+0 – 41+6 wkn	161,070 (92.6)	157,565 (91.4)	157,523 (93.0)	154,998 (91.6)	153,196 (93.1)	149,493 (93.0)
≥42+0 wkn	3,107 (1.8)	3,022 (1.8)	2,285 (1.3)	2,213 (1.3)	2,287 (1.4)	2,316 (1.4)
missing	484 (0.3)	2,115 (1.2)	559 (0.3)	2,646 (1.6)	638 (0.4)	301 (0.2)
Geboortegewicht	n=173,965	n=172,886	n=169,375	n=169,673	n=164,478	n=161,232
<1500 gram	1,054 (0.6)	1,801 (1.1)	1,079 (0.6)	1,812 (1.0)	1,059 (0.6)	1,525 (1.0)
1500 – 2499 gram	6,299 (3.6)	6,613 (3.8)	6,462 (3.8)	6,787 (4.0)	5,918 (3.6)	5,993 (3.7)
2500 – 3499 gram	82,177 (47.2)	81,569 (47.2)	82,303 (48.6)	82,434 (48.6)	79,130 (48.1)	77,552 (48.1)
3500 – 3999 gram	58,131 (33.5)	57,252 (33.1)	55,803 (32.9)	55,267 (32.6)	55,247 (33.6)	53,837 (33.4)
4000 – 4499 gram	21,551 (12.4)	21,167 (12.2)	19,986 (11.8)	19,845 (11.7)	19,400 (11.8)	18,939 (11.7)
≥4500 gram	4,134 (2.4)	4,099 (2.4)	3,229 (1.9)	3,228 (1.9)	3,116 (1.9)	3,051 (1.9)
missing	437 (0.3)	385 (0.2)	513 (0.3)	300 (0.2)	608 (0.4)	335 (0.2)



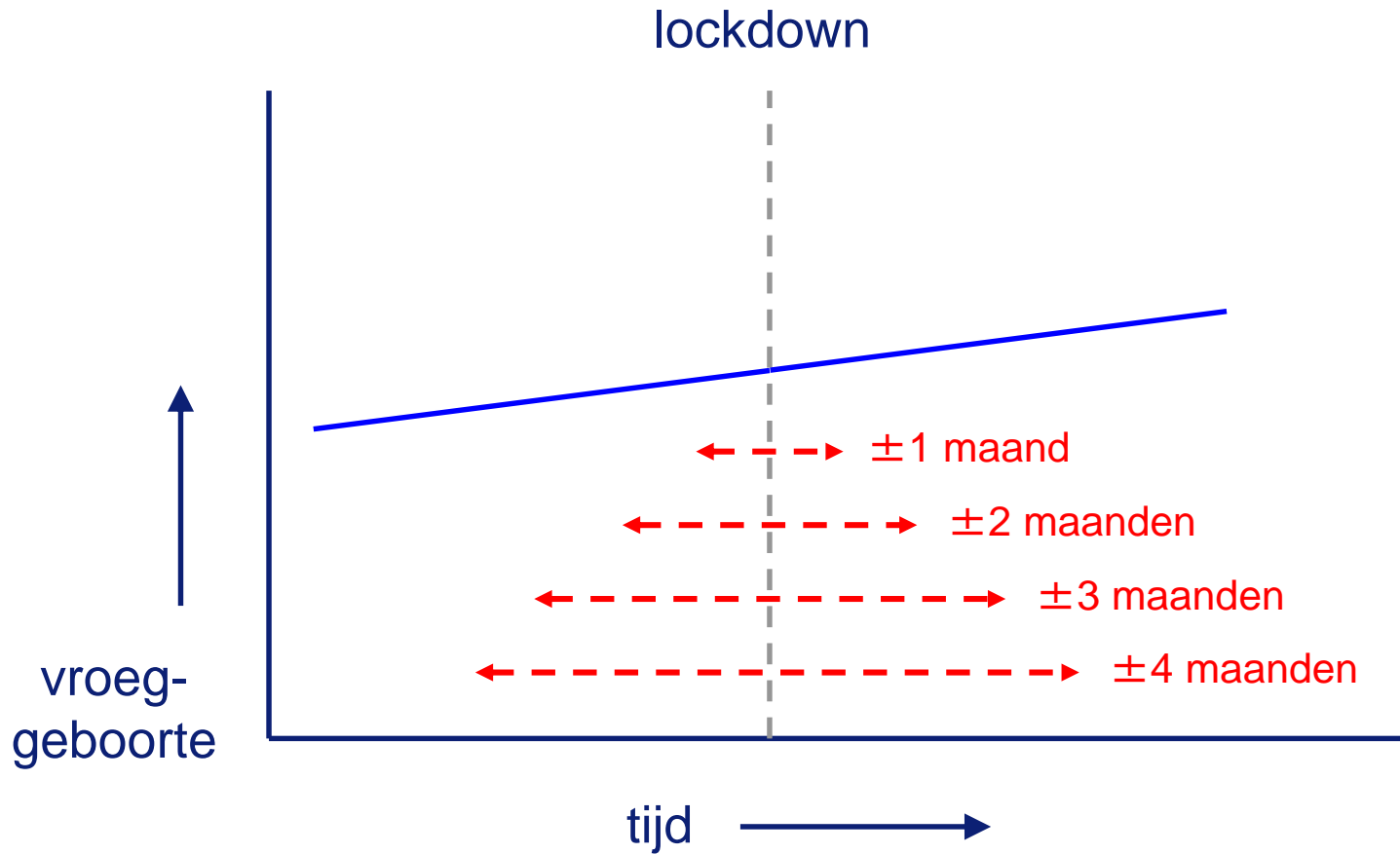
# Vergelijking met Perined

Karakteristiek	2011		2014		2017	
	Praeventis	Perined	Praeventis	Perined	Praeventis	Perined
Zwangerschapsduur	n=173,965	n=172,453	n=169,375	n=169,225	n=164,478	n=160,818
24+0 – 31+6 wkn	1,223 (0.7)	1,512 (0.9)	1,236 (0.7)	1,515 (0.9)	1,139 (0.7)	1,345 (0.8)
32+0 – 36+6 wkn	8,081 (4.6)	8,221 (4.8)	7,772 (4.6)	7,883 (4.7)	7,218 (4.4)	7,363 (4.6)
37+0 – 41+6 wkn	161,070 (92.6)	157,565 (91.4)	157,523 (93.0)	154,998 (91.6)	153,196 (93.1)	149,493 (93.0)
≥42+0 wkn	3,107 (1.8)	3,022 (1.8)	2,285 (1.3)	2,213 (1.3)	2,287 (1.4)	2,316 (1.4)
missing	484 (0.3)	2,115 (1.2)	559 (0.3)	2,646 (1.6)	638 (0.4)	301 (0.2)
Geboortegewicht	n=173,965	n=172,886	n=169,375	n=169,673	n=164,478	n=161,232
<1500 gram	1,054 (0.6)	1,801 (1.1)	1,079 (0.6)	1,812 (1.0)	1,059 (0.6)	1,525 (1.0)
1500 – 2499 gram	6,299 (3.6)	6,613 (3.8)	6,462 (3.8)	6,787 (4.0)	5,918 (3.6)	5,993 (3.7)
2500 – 3499 gram	82,177 (47.2)	81,569 (47.2)	82,303 (48.6)	82,434 (48.6)	79,130 (48.1)	77,552 (48.1)
3500 – 3999 gram	58,131 (33.5)	57,252 (33.1)	55,803 (32.9)	55,267 (32.6)	55,247 (33.6)	53,837 (33.4)
4000 – 4499 gram	21,551 (12.4)	21,167 (12.2)	19,986 (11.8)	19,845 (11.7)	19,400 (11.8)	18,939 (11.7)
≥4500 gram	4,134 (2.4)	4,099 (2.4)	3,229 (1.9)	3,228 (1.9)	3,116 (1.9)	3,051 (1.9)
missing	437 (0.3)	385 (0.2)	513 (0.3)	300 (0.2)	608 (0.4)	335 (0.2)

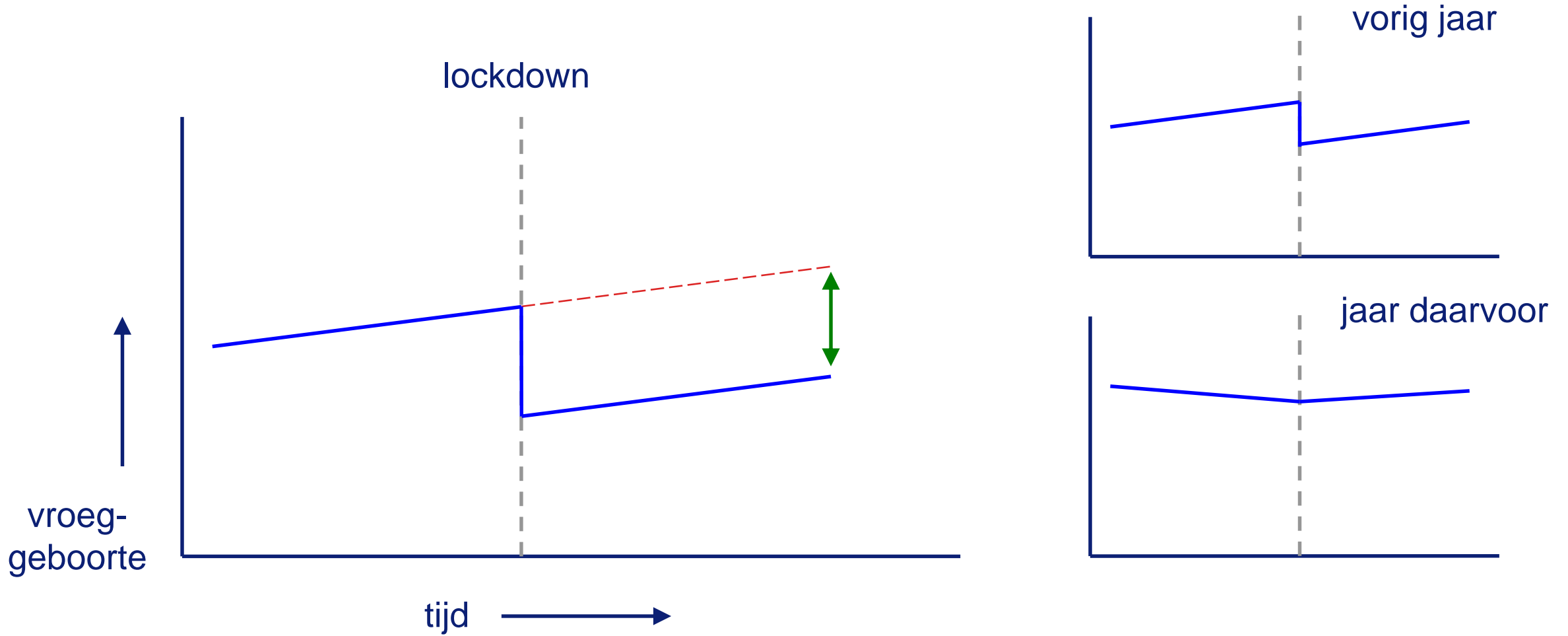
# Vergelijking met Perined

Karakteristiek	2011		2014		2017	
	Praeventis	Perined	Praeventis	Perined	Praeventis	Perined
Zwangerschapsduur	n=173,965	n=172,453	n=169,375	n=169,225	n=164,478	n=160,818
24+0 – 31+6 wkn	1,223 (0.7)	1,512 (0.9)	1,236 (0.7)	1,515 (0.9)	1,139 (0.7)	1,345 (0.8)
32+0 – 36+6 wkn	8,081 (4.6)	8,221 (4.8)	7,772 (4.6)	7,883 (4.7)	7,218 (4.4)	7,363 (4.6)
37+0 – 41+6 wkn	161,070 (92.6)	157,565 (91.4)	157,523 (93.0)	154,998 (91.6)	153,196 (93.1)	149,493 (93.0)
≥42+0 wkn	3,107 (1.8)	3,022 (1.8)	2,285 (1.3)	2,213 (1.3)	2,287 (1.4)	2,316 (1.4)
missing	484 (0.3)	2,115 (1.2)	559 (0.3)	2,646 (1.6)	638 (0.4)	301 (0.2)
Geboortegewicht	n=173,965	n=172,886	n=169,375	n=169,673	n=164,478	n=161,232
<1500 gram	1,054 (0.6)	1,801 (1.1)	1,079 (0.6)	1,812 (1.0)	1,059 (0.6)	1,525 (1.0)
1500 – 2499 gram	6,299 (3.6)	6,613 (3.8)	6,462 (3.8)	6,787 (4.0)	5,918 (3.6)	5,993 (3.7)
2500 – 3499 gram	82,177 (47.2)	81,569 (47.2)	82,303 (48.6)	82,434 (48.6)	79,130 (48.1)	77,552 (48.1)
3500 – 3999 gram	58,131 (33.5)	57,252 (33.1)	55,803 (32.9)	55,267 (32.6)	55,247 (33.6)	53,837 (33.4)
4000 – 4499 gram	21,551 (12.4)	21,167 (12.2)	19,986 (11.8)	19,845 (11.7)	19,400 (11.8)	18,939 (11.7)
≥4500 gram	4,134 (2.4)	4,099 (2.4)	3,229 (1.9)	3,228 (1.9)	3,116 (1.9)	3,051 (1.9)
missing	437 (0.3)	385 (0.2)	513 (0.3)	300 (0.2)	608 (0.4)	335 (0.2)

# Difference in regression discontinuity analysis

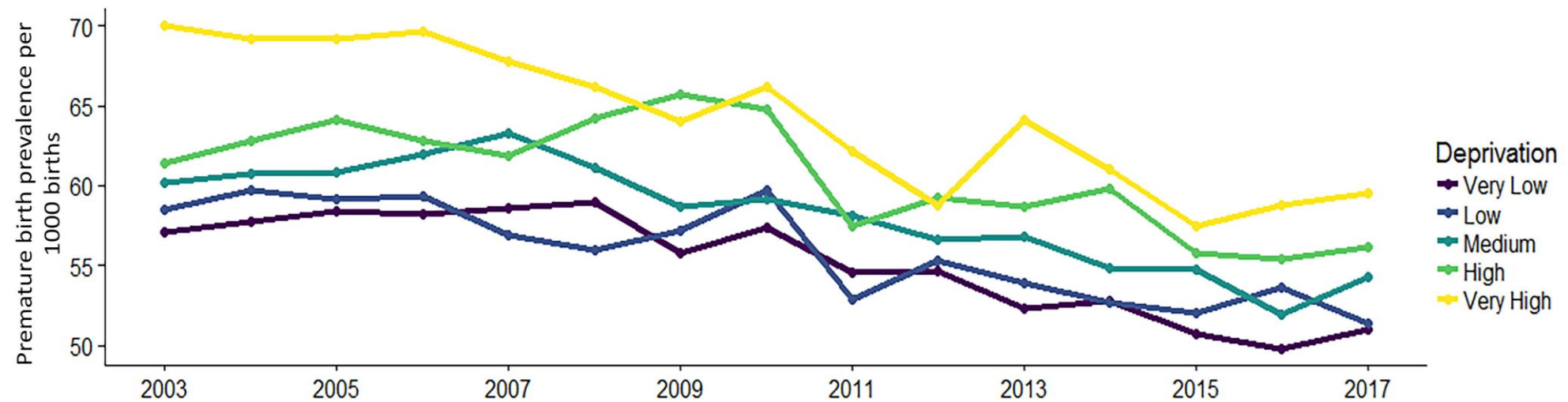


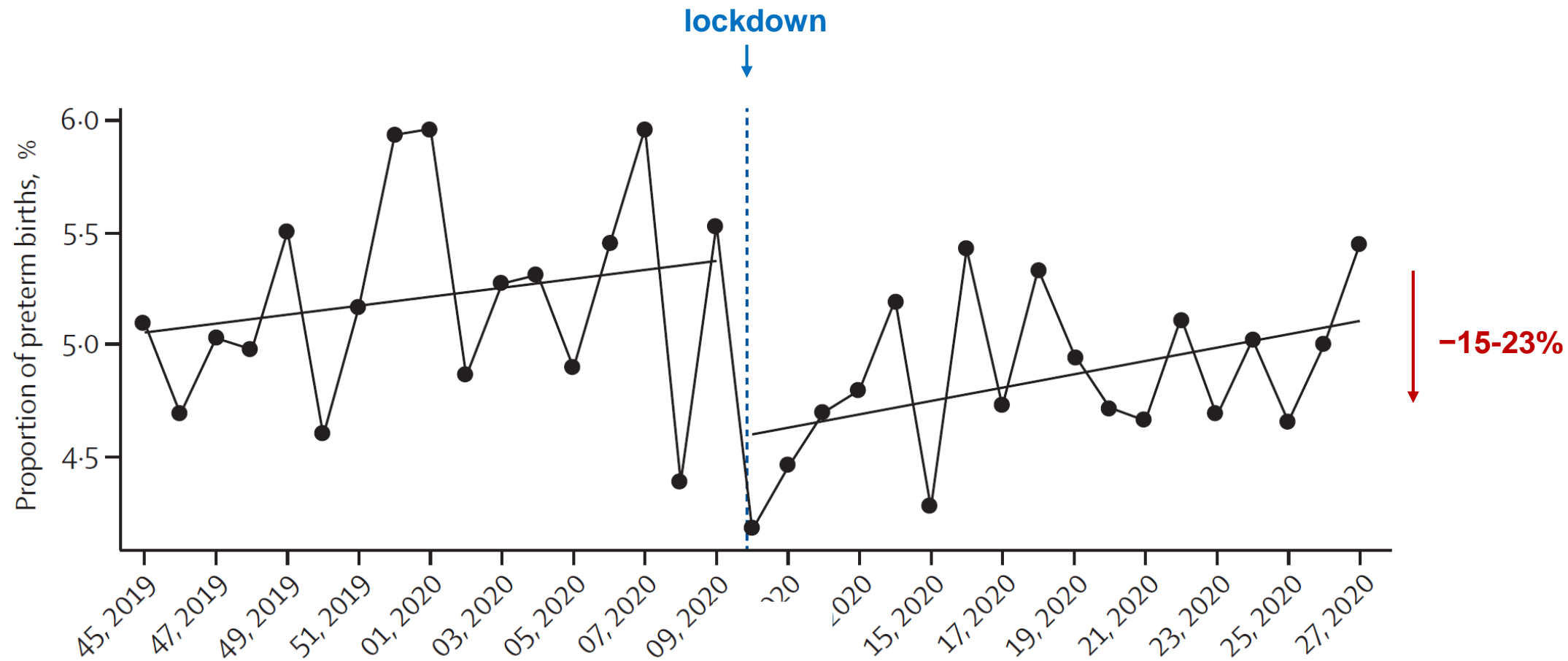
# Difference in regression discontinuity analysis



# Persisting inequalities in birth outcomes related to neighbourhood deprivation

Loes C M Bertens,<sup>1</sup> Lizbeth Burgos Ochoa ,<sup>1</sup> Tom Van Ourti,<sup>2,3</sup> Eric A P Steegers,<sup>1</sup> Jasper V Been<sup>1,4,5</sup>







ACHTERGROND EFFECTEN CORONACRISIS

## Minder zieke kinderen en een mild griepseizoen: coronacrisis heeft ook voordelen

Het coronavirus veroorzaakt een hoop medische ellende, maar onderzoekers en artsen zien ook positieve effecten door het vele handen wassen, afstand houden en andere lockdownmaatregelen. Enkele opvallende voorbeelden.

Dagmar Heeg 7 september 2020, 11:48



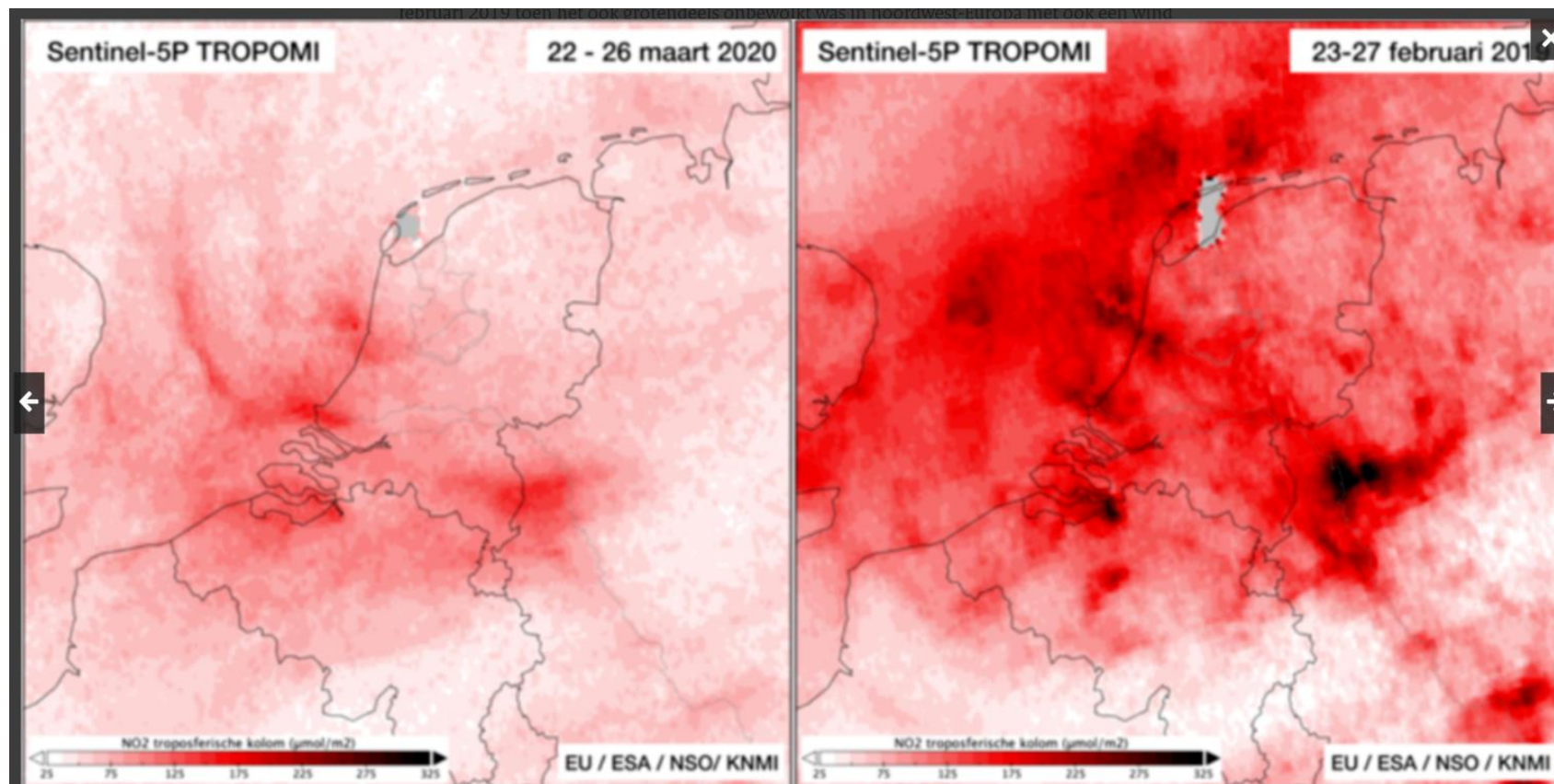




# Minder luchtvervuiling in NL na lockdown (NO<sub>2</sub>)

2020

2019





## Change in the Incidence of Stillbirth and Preterm Delivery During the COVID-19 Pandemic

Asma Khalil, MD

Peter von Dadelszen, PhD

Tim Draycott, MD

Austin Ugwumadu, PhD

Pat O'Brien, MBBCh, MRCOG, MFFP

Laura Magee, PhD

**JAMA** Published online July 10, 2020

**3-4x meer  
foetale sterfte**

**BBC NEWS**

Home | Coronavirus | UK | World | Business | Politics | Tech | More ▾

## Stillbirth rise during pandemic leads to safety review

🕒 02 November 2020 | Health



GETTY IMAGES

A rise in stillbirths between April and June, at the peak of the coronavirus pandemic, has prompted a national review by a patient safety body in England.

## Change in the Incidence of Stillbirth and Preterm Delivery During the COVID-19 Pandemic

Asma Khalil, MD

Peter von Dadelszen, PhD

Tim Draycott, MD

Austin Ugwumadu, PhD

Pat O'Brien, MBBCh, MRCOG, MFFP

Laura Magee, PhD

**JAMA** Published online July 10, 2020

**3-4x meer  
foetale sterfte**

## Change in obstetric attendance and activities during the COVID-19 pandemic

*\*Asma Khalil, Peter von Dadelszen, Erkan Kalafat, Mercede Sebghati, Shamez Ladhani, Austin Ugwumadu, Tim Draycott, Pat O'Brien, Laura Magee, on behalf of the PregnaCOVID3 study group*

**Lancet Infect Dis 2020**

**19% minder  
obstetric triage visits**

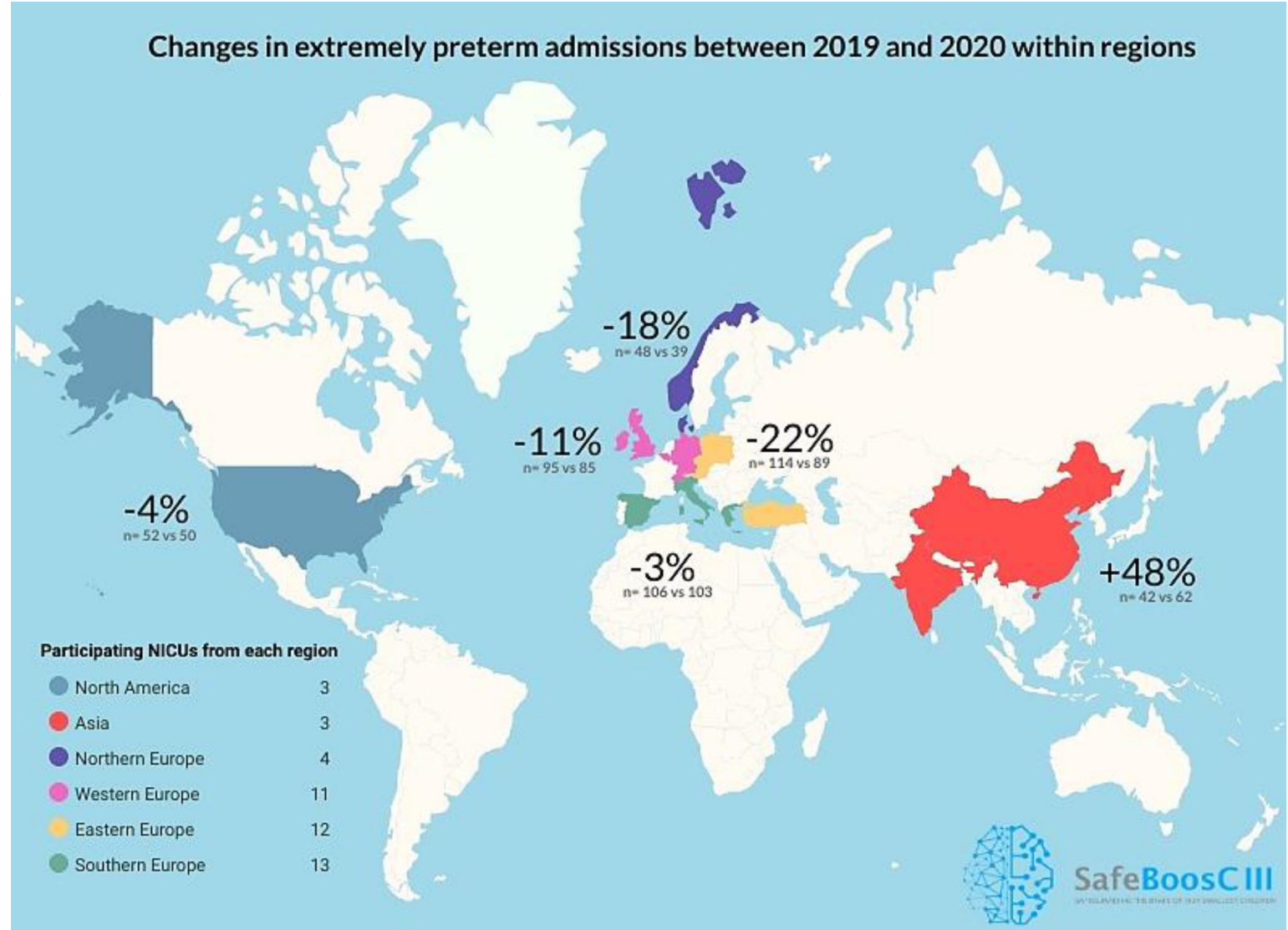
# Extremely preterm infant admissions within the SafeBoosC-III consortium during the COVID-19 lockdown

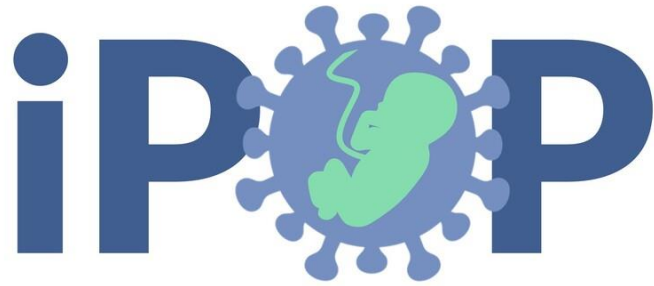
Marie Isabel Rasmussen, Mathias Lühr Hansen, Gerhard Pichler, Eugene Dempsey, Adelina Pellicer, Afif EL-Khuffash, A Shashidhar, Salvador Piris-Borregas, Miguel Alsina, Merih Cetinkaya, Lina Chalak, Hilal Ozkan, Mariana Baserga, Jan Sirc, Hans Fuchs, Ebru Ergenekon, Luis Arruza, Amit Mathur, Martin Stocker, Olalla Otero Vaccarello, Tomasz Szczapa, Kosmas Sarafidis, Barbara Krolak-Olejnik, Asli Memisoglu, Hallvard Reigstad, Elżbieta Rafińska-Ważny, Eleftheria Hatzidaki, Zhang Peng, Despoina Gkentzi, Renaud Viellevoye, Julie De Buyst, Emmanuele Mastretta, Ping Wang, Gitte Holst Hahn, Lars Bender, Luc Cornette, Jakub Tkaczyk, Ruth del Rio, Monica Fumagalli, Evangelina Papatoma, Maria Wilinska, Gunnar Naulers, Iwona Sadowska-Krawczenko, Chantal Lecart, Maria Luz Couce, Siv Fredly, Anne Marie Heuchan, Tanja Karen, Gorm Greisen

doi: <https://doi.org/10.1101/2020.10.02.20204578>



## Changes in extremely preterm admissions between 2019 and 2020 within regions



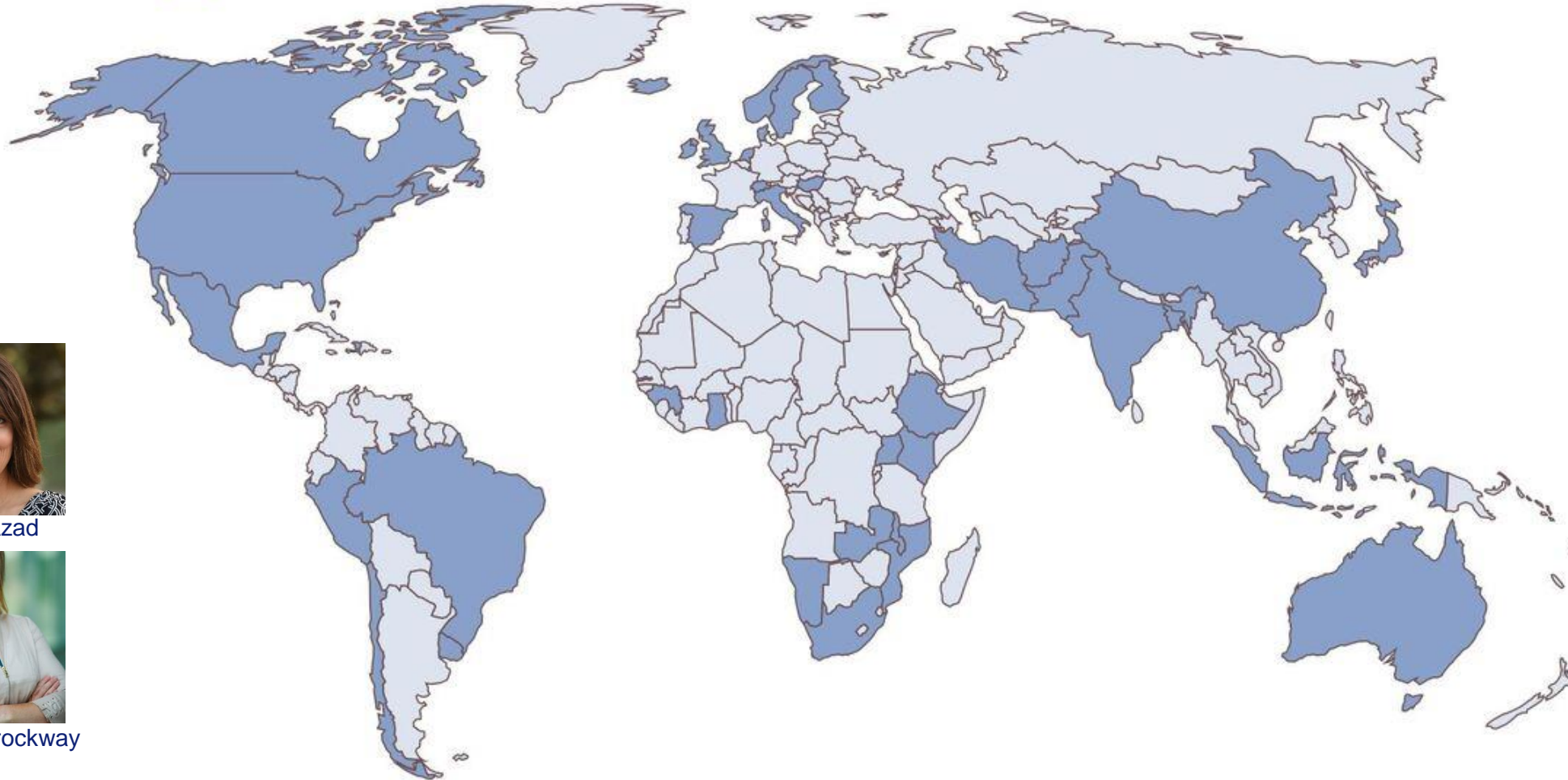


International  
Perinatal  
Outcomes in the  
Pandemic  
Study



Participating Countries as of 09/24/2020

Join Us! [www.ipopstudy.com](http://www.ipopstudy.com)



Meghan Azad



Merilee Brockway



Sarah Stock



David Burgner



Helga Zoega



nationale  
wetenschaps  
agenda





# Impact of COVID-19 mitigation measures on the incidence of preterm birth: a national quasi-experimental study

Jasper V Been, Lizbeth Burgos Ochoa, Loes C M Bertens, Sam Schoenmakers, Eric A P Steegers, Irwin K M Reiss

Lancet Public Health 2020; 5: e604-11

[https://doi.org/10.1016/S2468-2667\(20\)30223-1](https://doi.org/10.1016/S2468-2667(20)30223-1)

## Did Lockdowns Lower Premature Births? A New Study Adds Evidence

Dutch researchers say the “impact was real,” adding to hopes that doctors will learn more about factors contributing to preterm birth.



The New York Times



HOME GASTEN TALKSHOW TOPICS OVER EVA



Lockdown positief voor bevalling?

15 OKTOBER 2020 12:10 / FRAGMENTEN



Lizbeth Burgos Ochoa



Eric Steegers



Loes Bertens



Irwin Reiss



Sam Schoenmakers



Martin de Vries

Roger Venema